



# NIMEC LIMITED

*Fast-Easy-Amazing*

# GRAVITY BASED POWER PLANT

Add More Mass to Get More Gravity



Zero carbon emissions



Stable power generation

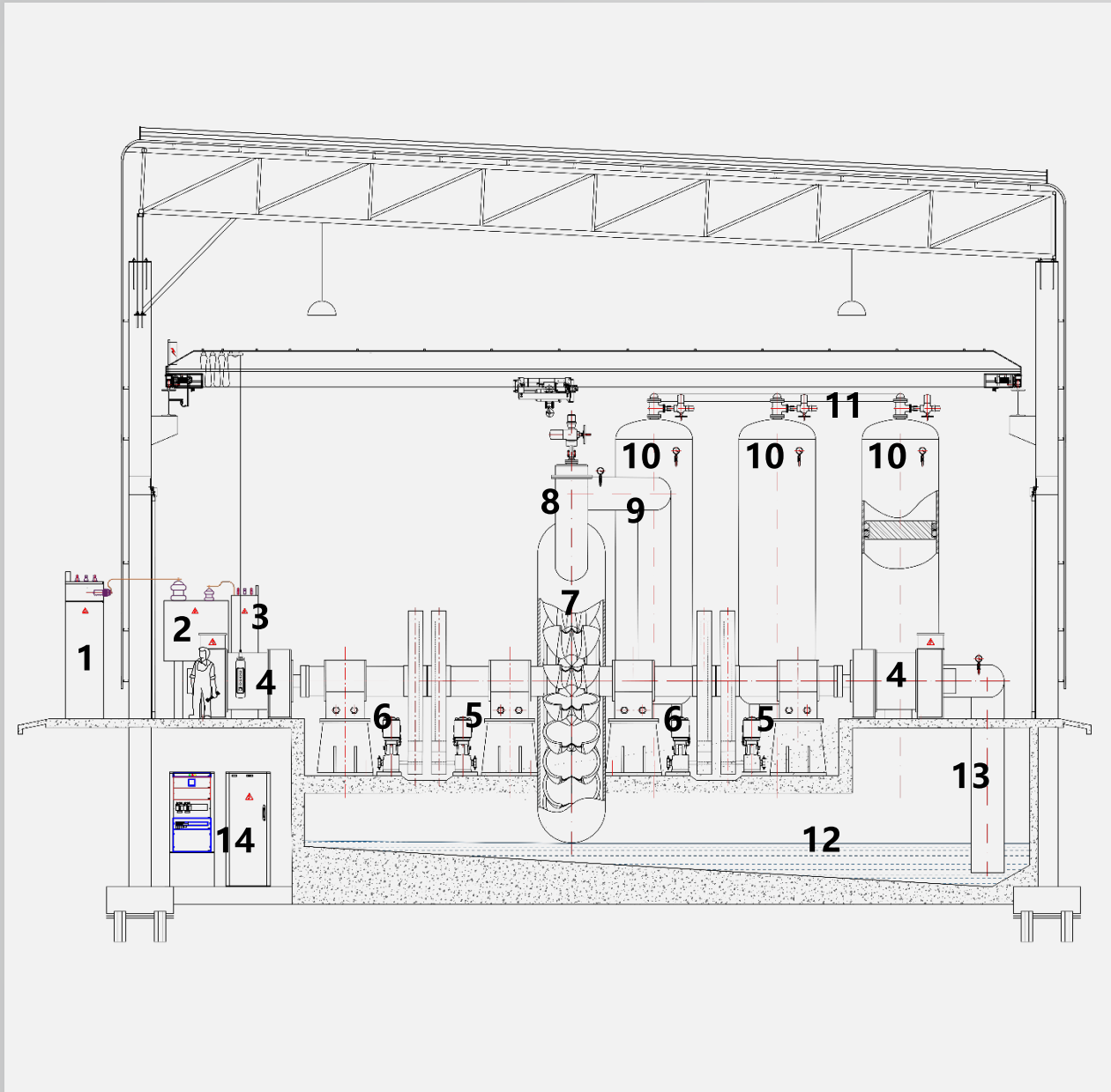


Modular structure and quick commissioning time



Using solar energy and Earth's gravitational energy





- 1 - High voltage grid connection box
- 2 - High voltage transformer
- 3 - Reactive power control unit
- 4 - Permanent magnet generator
- 5 - Magnet to Power UNIT
- 6 - High Pressure PUMP
- 7 - Bucket turbine
- 8 - Nozzle for releasing pressurized liquid
- 9 - Pressurized fluid pipeline
- 10 - Cylinder containers for working fluid
- 11 - Pipeline for pumping or supplying air
- 12 - Pool with working fluid
- 13 - Suction line for working fluid
- 14 - Operation control and energy storage module for starting after stopping





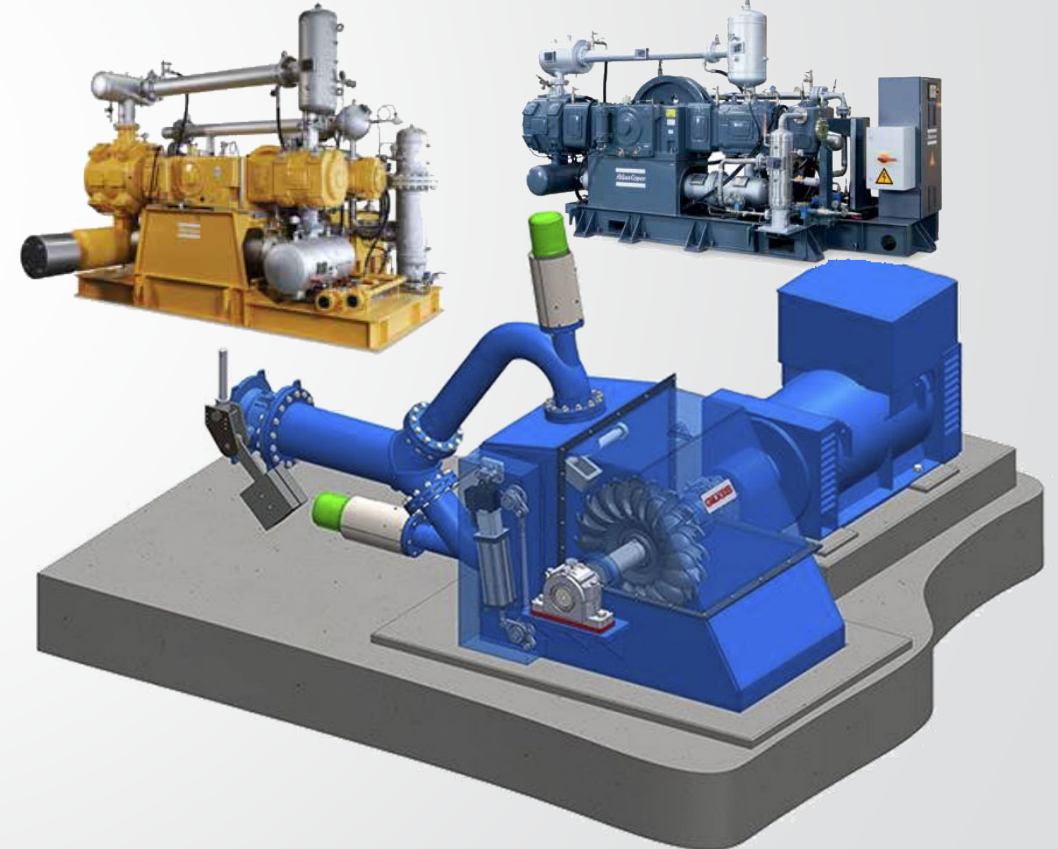
# Brief Information



NIMEC (New Integrated Mineral Extraction Company) established 06.08.2020 at the most difficult time associated with great business restrictions and despite the difficulties. But our company is moving towards its goals and expanding its spheres of influence and business with every step.

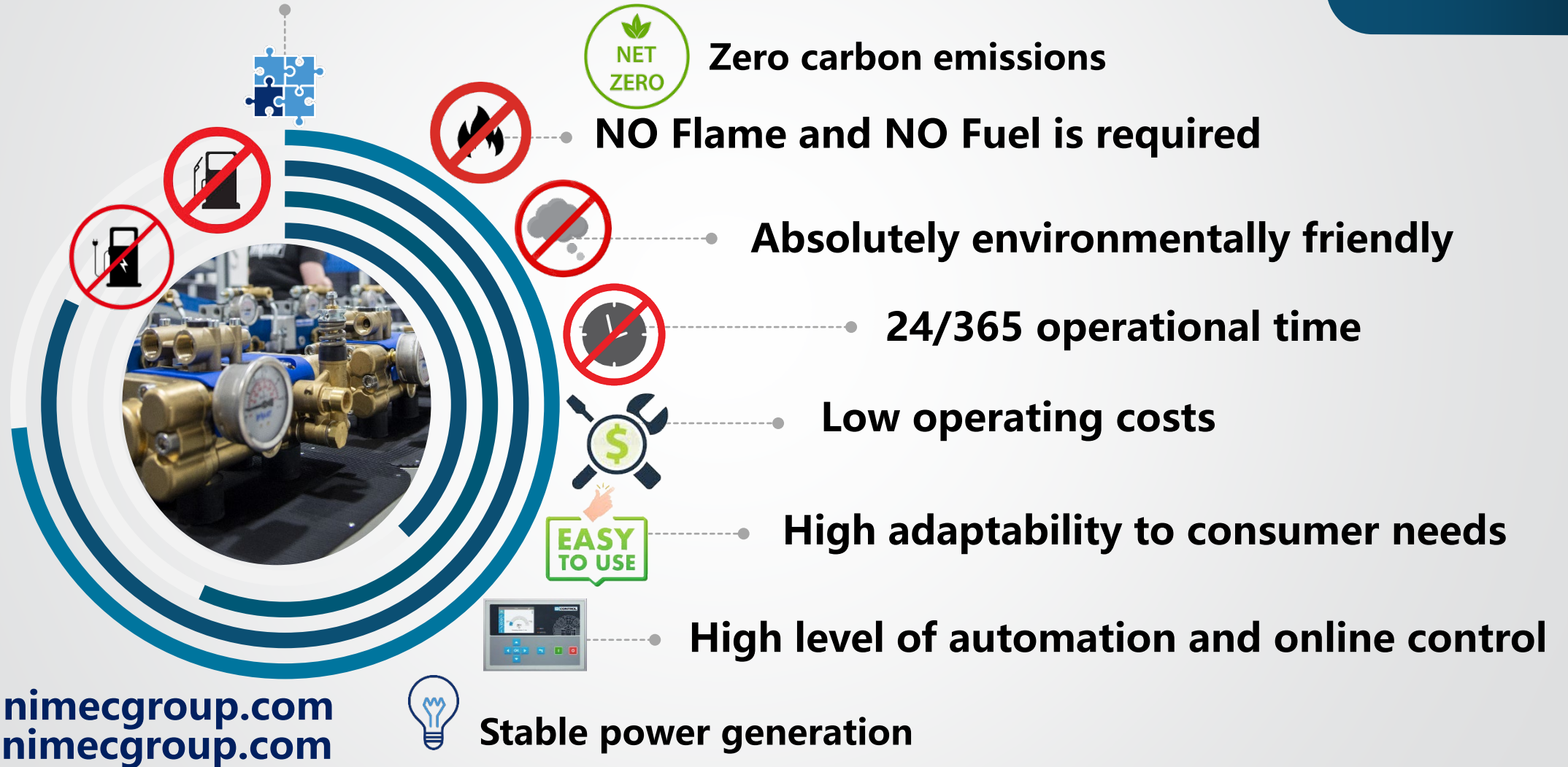
We present unique energy-saving, carbon-free or carbon-transforming solutions and technologies. Our solutions cover the mining, crude oil and electric power industries. We explore non-standard ways of chemical and physical transformations, as well as the forces of magnetism and gravity.

Ultimately, power generation relies on the water cycle to replenish the reservoir from which it falls, making it a renewable process without the need for natural or any other gas, coal or other fossil fuels. Unlike conventional hydroelectric power plants located on rivers, our station does not create a barrier for fish. Many species of migratory fish swim up and down rivers to complete their life cycle. The dams of conventional hydroelectric power stations are clearly blocking the passage of fish. Our station assumes a water cycle with minimal contact with air, thus we reduce evaporation to a minimum. We use closed reservoirs and watercourses. The clear advantages of NIMEC technology is 100% "GREEN" energy obtaining.



# Units advantages

## Modular Structure



[info@nimecgroup.com](mailto:info@nimecgroup.com)  
[www.nimecgroup.com](http://www.nimecgroup.com)